

HOUSE AND LAND PACKAGE



Brooklyn

Berkley Facade Option

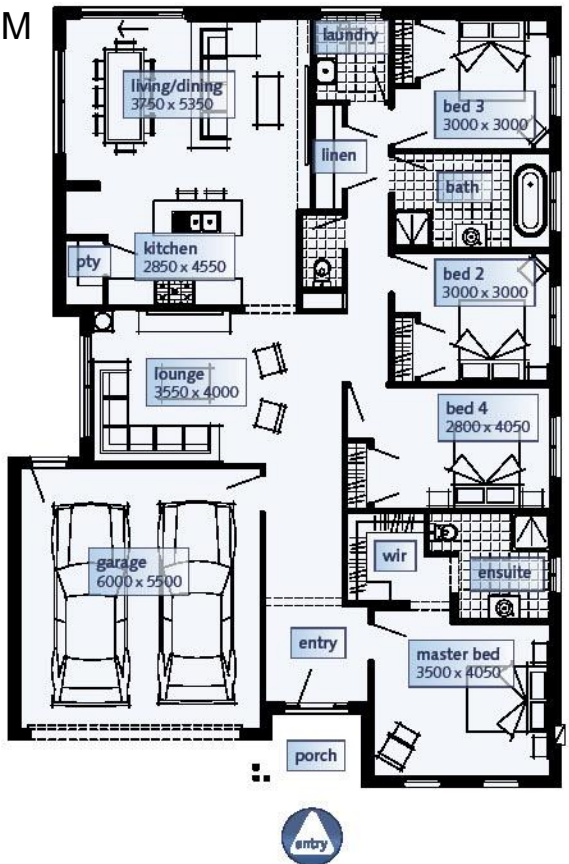


From **\$373,309**

544SQM

LOT 28 RACING WAY
CHAMPIONS ESTATE

- Estate Covenants & Driveway
- Site Cost Allowance
- BAL 12.5 & NBN
- 900mm Stainless Steel Free Standing Cooker
- 900mm Stainless Steel Canopy
- Tiled Shower Base
- 6 Star Energy Rating
- Rheem Solar Hot Water Service
- Gas Ducted Heating
- Tiles to Wet Areas, Carpets, Floorboards & Garage Remote
- Flyscreens to All Openable Windows



| BROOKLYN | | |
|--------------|----------------------|----------|
| Dimensions | SQ.M | Squares |
| Ground Floor | 167.15m ² | 17.99Sqs |
| Porch | 4.11m ² | 0.44Sqs |
| Garage | 36.41m ² | 3.92Sqs |
| Total area | 207.67m ² | 22.35Sqs |

| | |
|---|--------|
| Width | 12.60m |
| Depth | 17.87m |
| Suggested minimum block width: 14.00m New Living range specification | |

Please contact: SALES CONSULTANT

Name BRENT JACOBSSON

Number 0428 953 208

1300 SIMONDS simonds.com.au

SIMONDS
we're in it together

Images shown for illustrative purposes and may not represent the final product. Prices are based on availability and price of land. Simonds reserves the right to alter any price or substitute any home without prior notice. All house and land packages are subject to developers' final approval. In the event that a Homesite does not have Survey Pegs in place to identify lot boundary then a additional charge will be added to the cost of the house.