

# HOUSE AND LAND PACKAGE



## Hudson

Kew Facade Option



From **\$360,809**

LOT 37 RACING WAY

CHAMPIONS ESTATE

Estate Covenants

Site Cost Allowance & Driveway

BAL 12.5 & NBN

900mm Stainless Steel Free Standing Cooker

900mm Stainless Steel Canopy

Tiled Shower Base

6 Star Energy Rating

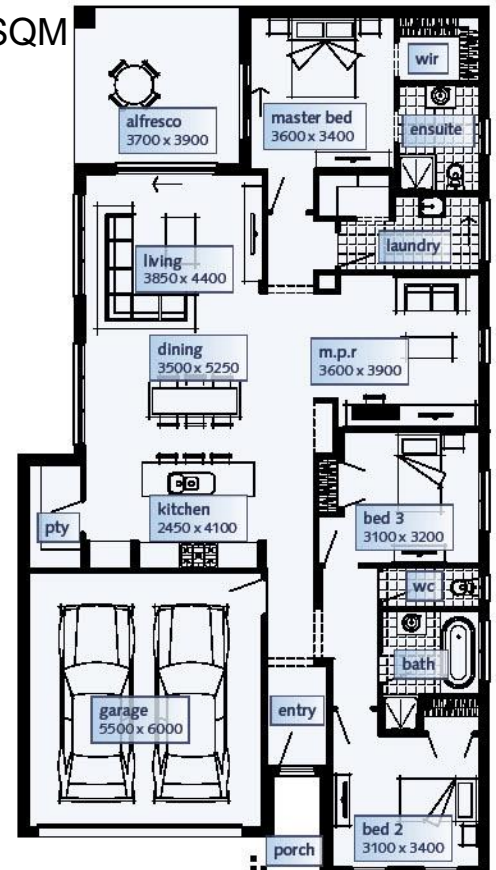
Rheem Solar Hot Water Service

Gas Ducted Heating

Tiles to Wet Areas. Carpets. Floorboards & Garage Remote

HUDSON		
Dimensions	SQ.M	Squares
Ground Floor	154.45m <sup>2</sup>	16.63Sqs
Porch	3.38m <sup>2</sup>	0.36Sqs
Alfresco	14.39m <sup>2</sup>	1.55Sqs
Garage	36.25m <sup>2</sup>	3.90Sqs
Total area	208.47m <sup>2</sup>	22.44Sqs
Width 11.10m		
Depth 20.51m		
Suggested minimum block width: 12.50m		
New Living range specification		

450SQM



Please contact: SALES CONSULTANT

Name BRENT JACOBSSON

Number 0428 953 208



1300 SIMONDS [simonds.com.au](http://simonds.com.au)

**SIMONDS**  
we're in it together

Images shown for illustrative purposes and may not represent the final product. Prices are based on availability and price of land. Simonds reserves the right to alter any price or substitute any home without prior notice. All house and land packages are subject to developers' final approval. In the event that a Homesite does not have Survey Pegs in place to identify lot boundary then a additional charge will be added to the cost of the house.